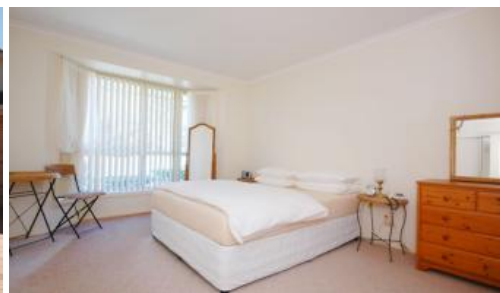


Sold

1B, 190 Pacific Drive, Port Macquarie



A Villa Of Distinction

Splendid villa residence for the single professional or retirees. Nestled between Lighthouse Beach and Shelly Beach making it ideal to stroll to the headland or beaches and an easy drive or bus to CBD. Immaculate presentation, this three bedroom home features two bathrooms (ensuite to main bedroom), built-in-wardrobes, remote garage door with internal access, modern kitchen including dishwasher and range hood. Living room flows to outside deck and private North facing courtyard. Direct street frontage and access with only 2 villas in the complex making management easy and inexpensive. Council Rates: \$2,100 pa. Strata Levies: \$497 pa.

The above information provided has been furnished to us by the vendor/s. We have not verified whether or not that information is accurate and do not have any belief in one way or the other in its accuracy. We do not accept any responsibility to any person for its accuracy and do no more than pass it on. All interested parties should make and rely upon their own inquiries in order to determine whether or not this information is in fact accurate.

3 2 1 350 m2

Price	SOLD
Property Type	Residential
Property ID	1473
Land Area	350 m2
Floor Area	111.48 m2

Agent Details

Office Details

Lake Cathie Bonny Hills Real Estate
SHOP 6 1609 Ocean Dr Lake Cathie
NSW 2445 Australia
02 6585 5777

